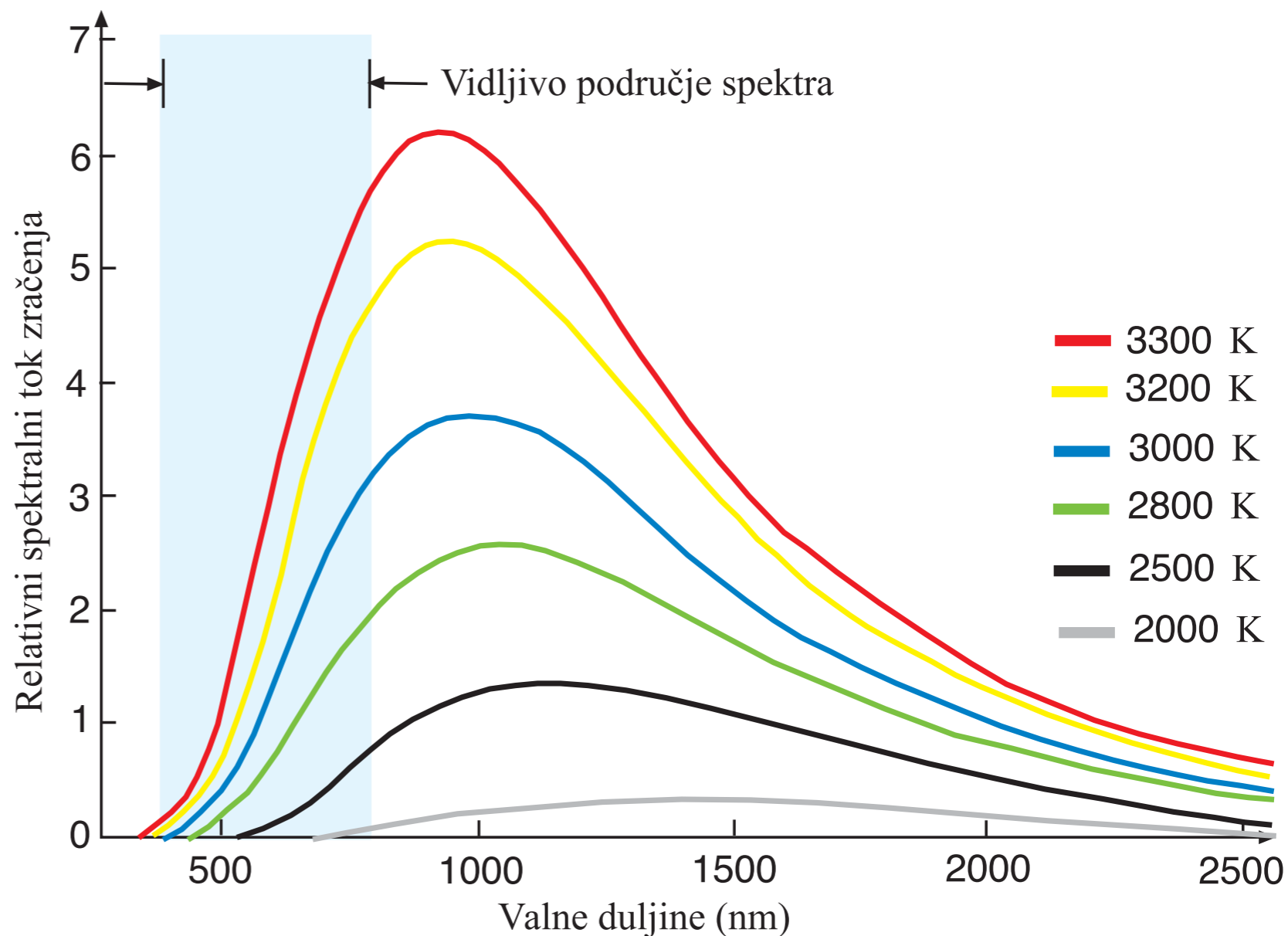
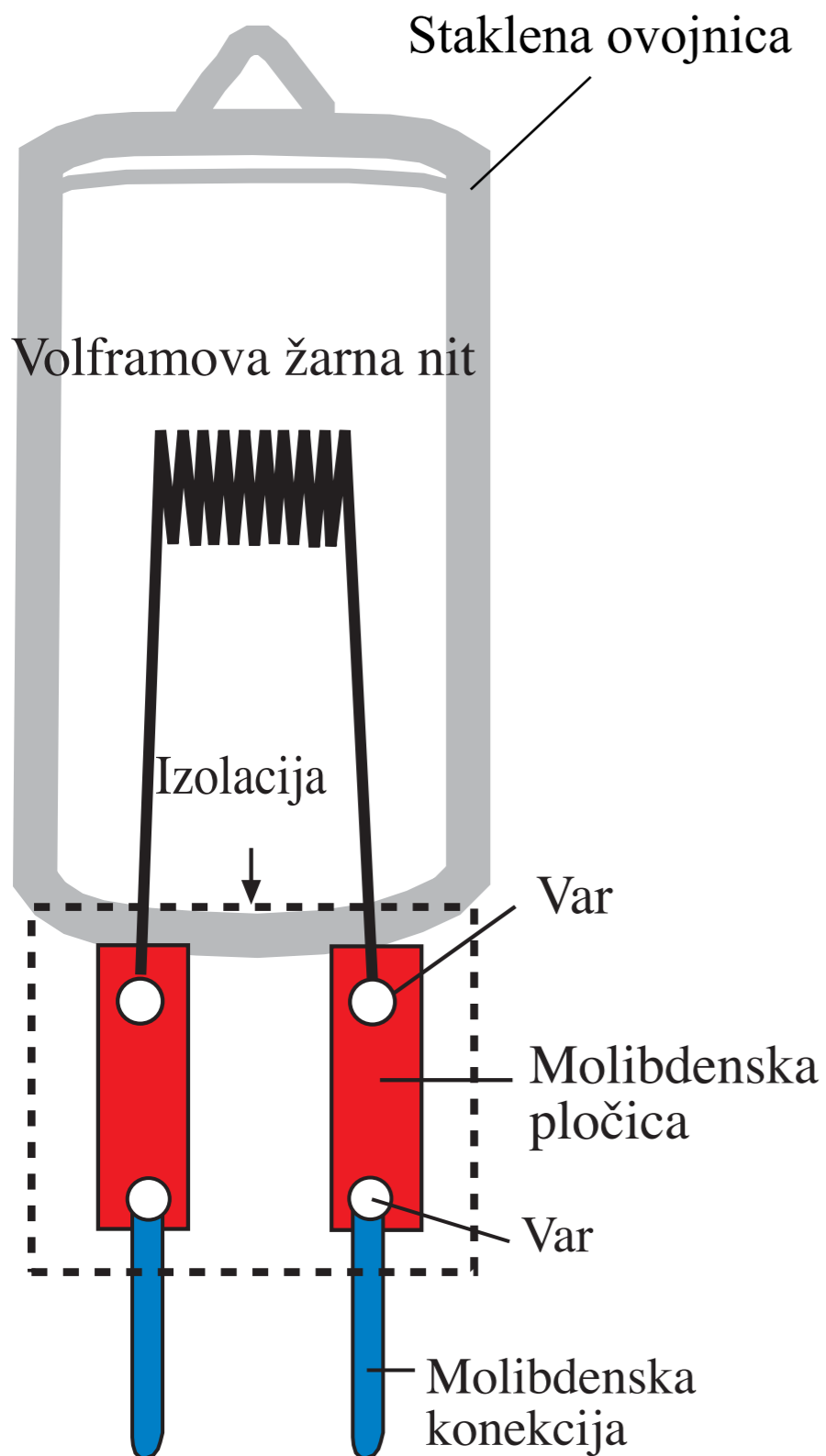
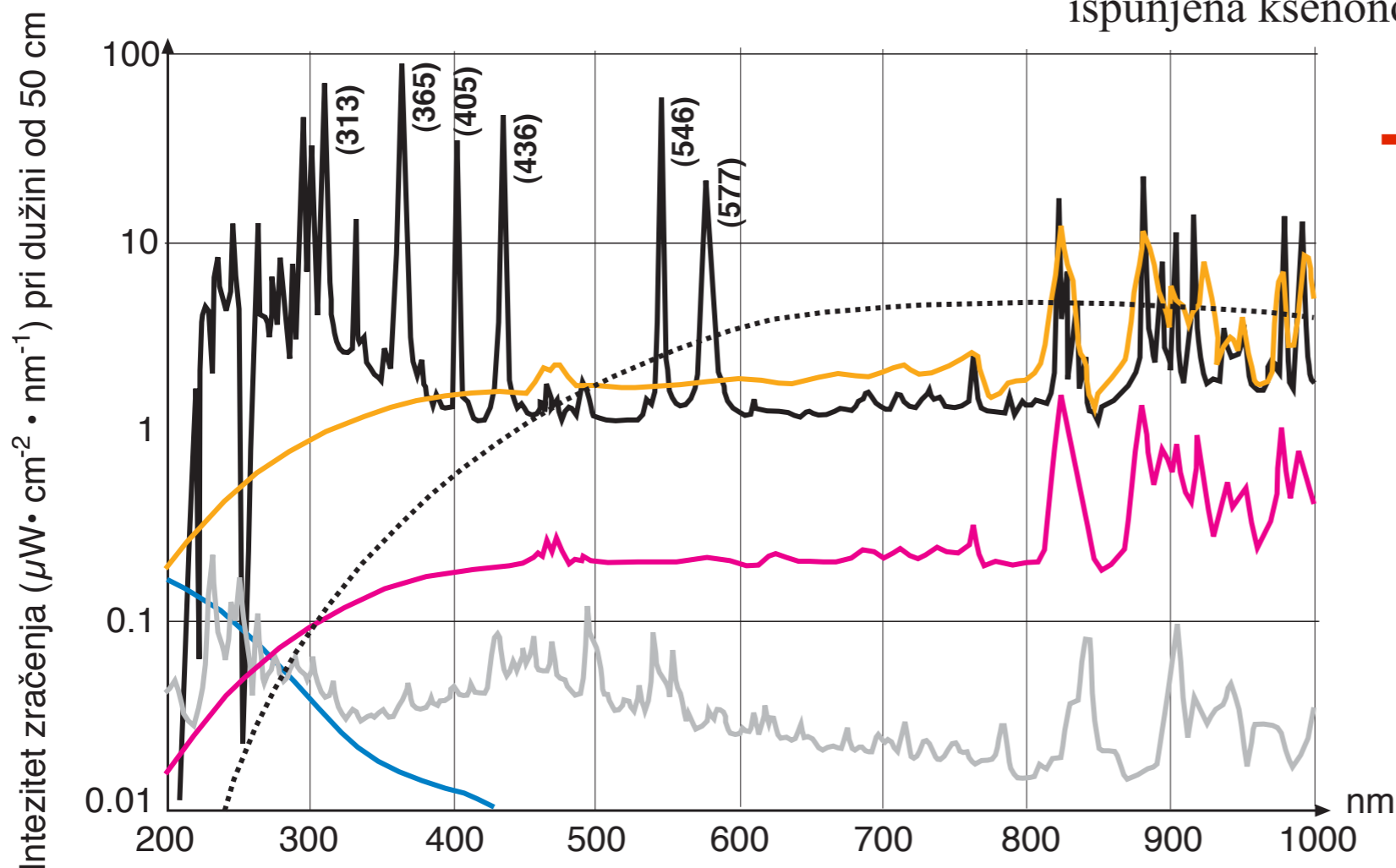
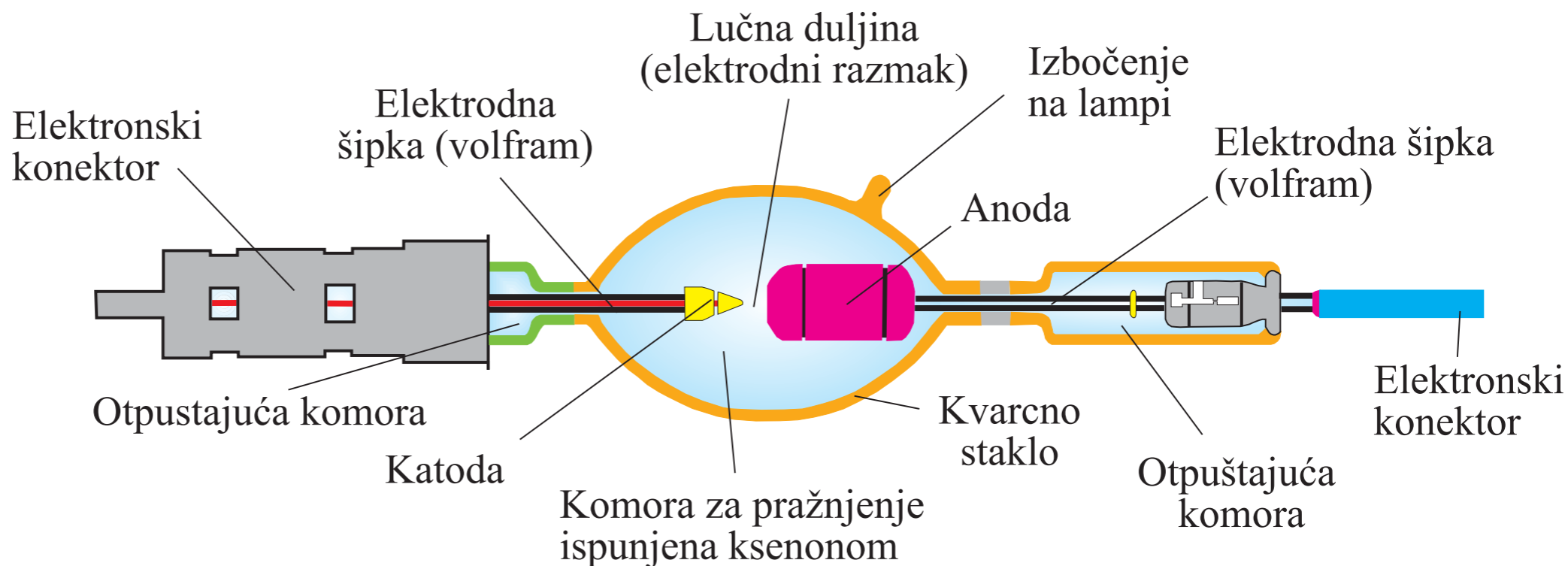


Tip svjetlosnog izvora (lempe za osvjetljavanje)



Volfram halogene lampe

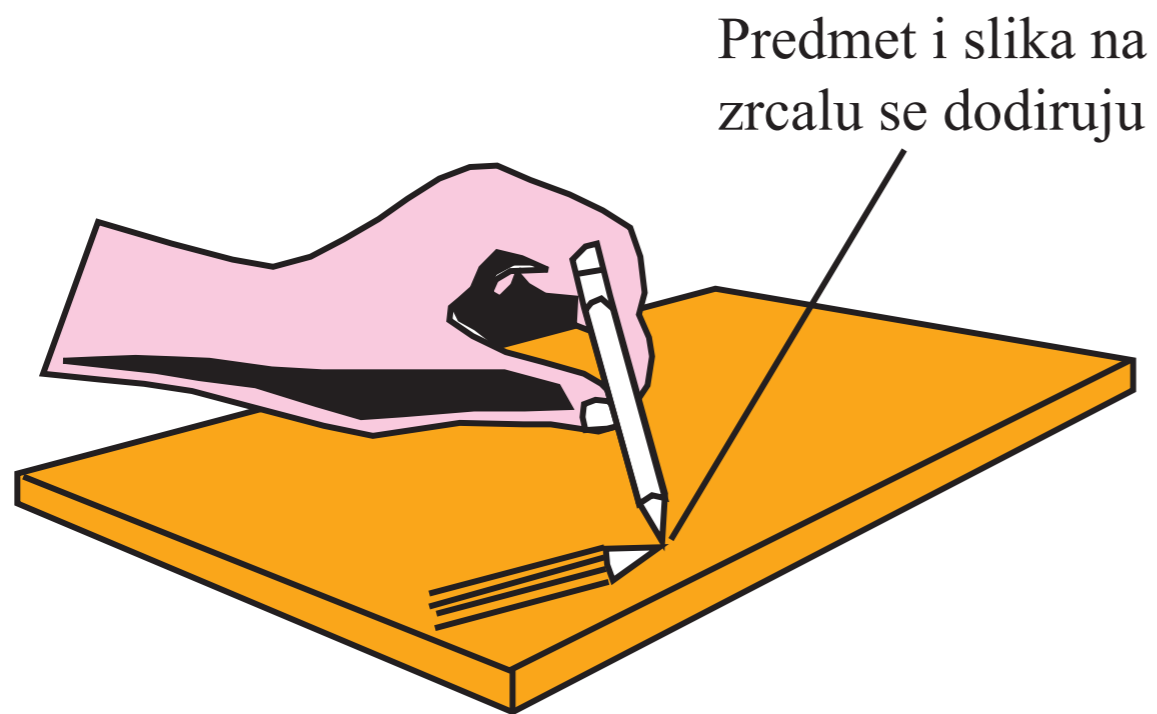
Ksenonske lampe



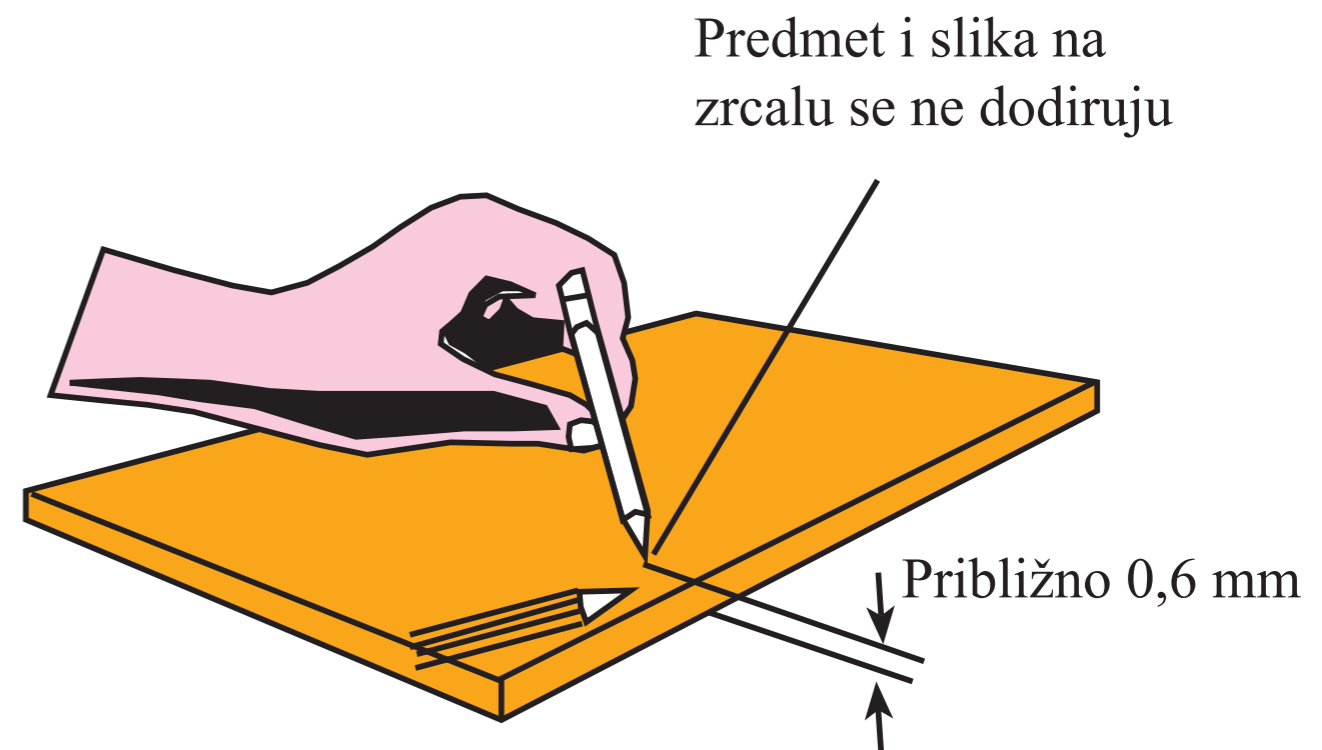
Tip svjetlosnog izvora (lampe za osvjetljavanje)

- Halogena lampa (24 V - 150 V)
- Živina ksenonska lampa (200W)
- Ksenonska fleš lampa (15 W)
- Ksenonska lampa (35 W)
- Ksenonska lampa (150 W)
- Deuterijska lampa (30W)

Način nanašanja refleksijske površinom na ogledala

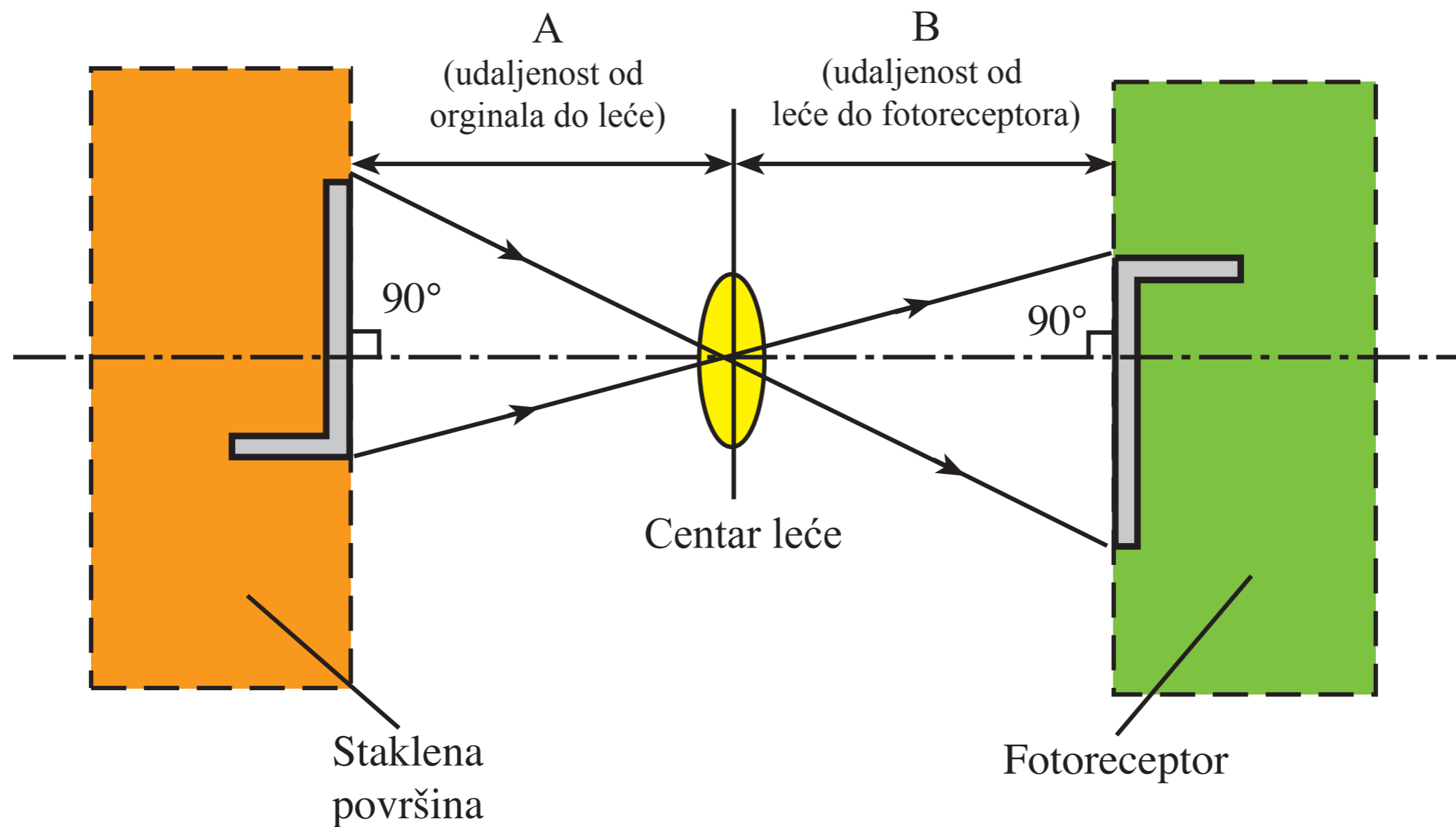


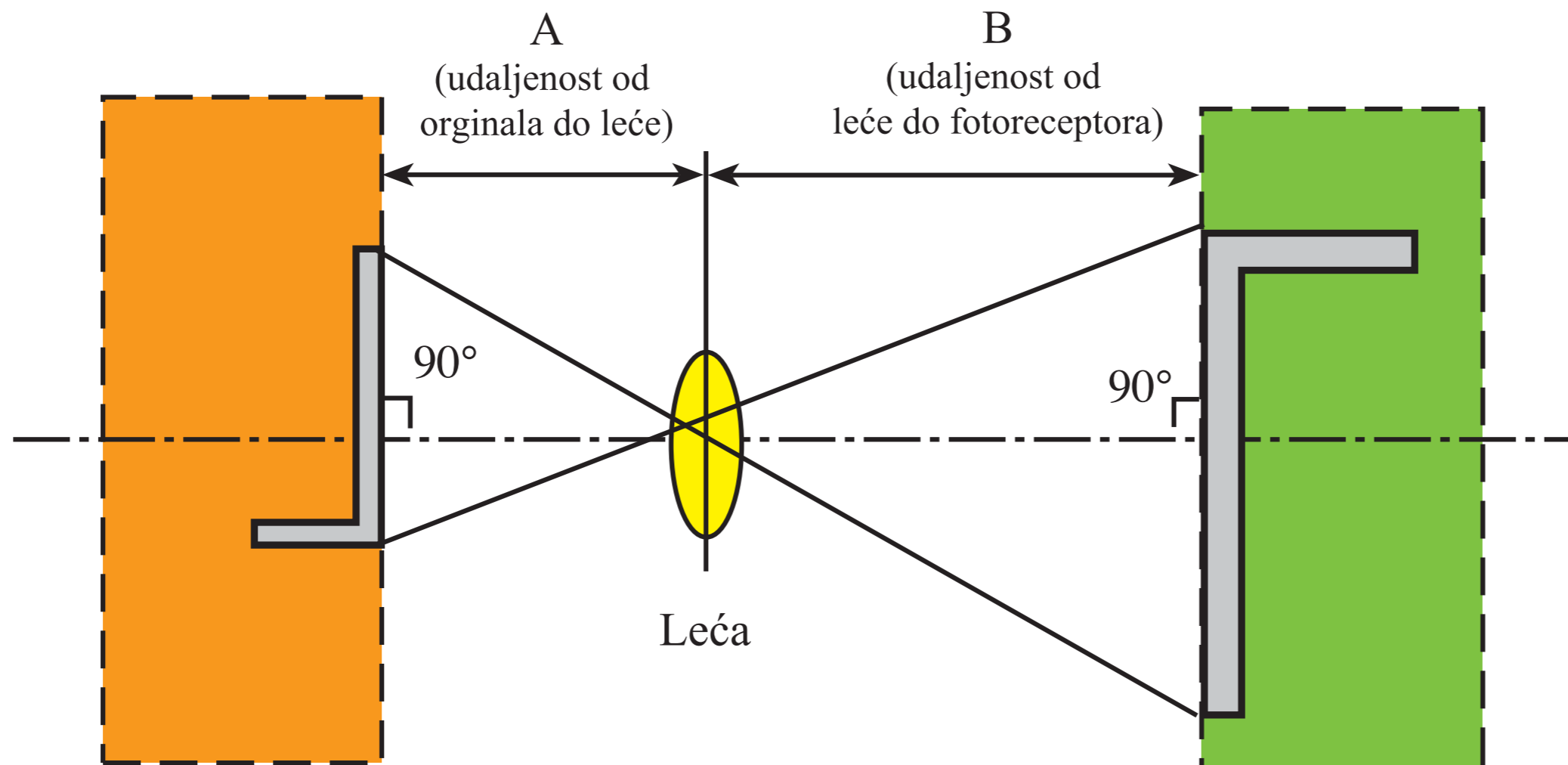
- površina nanešena sa gornje strane

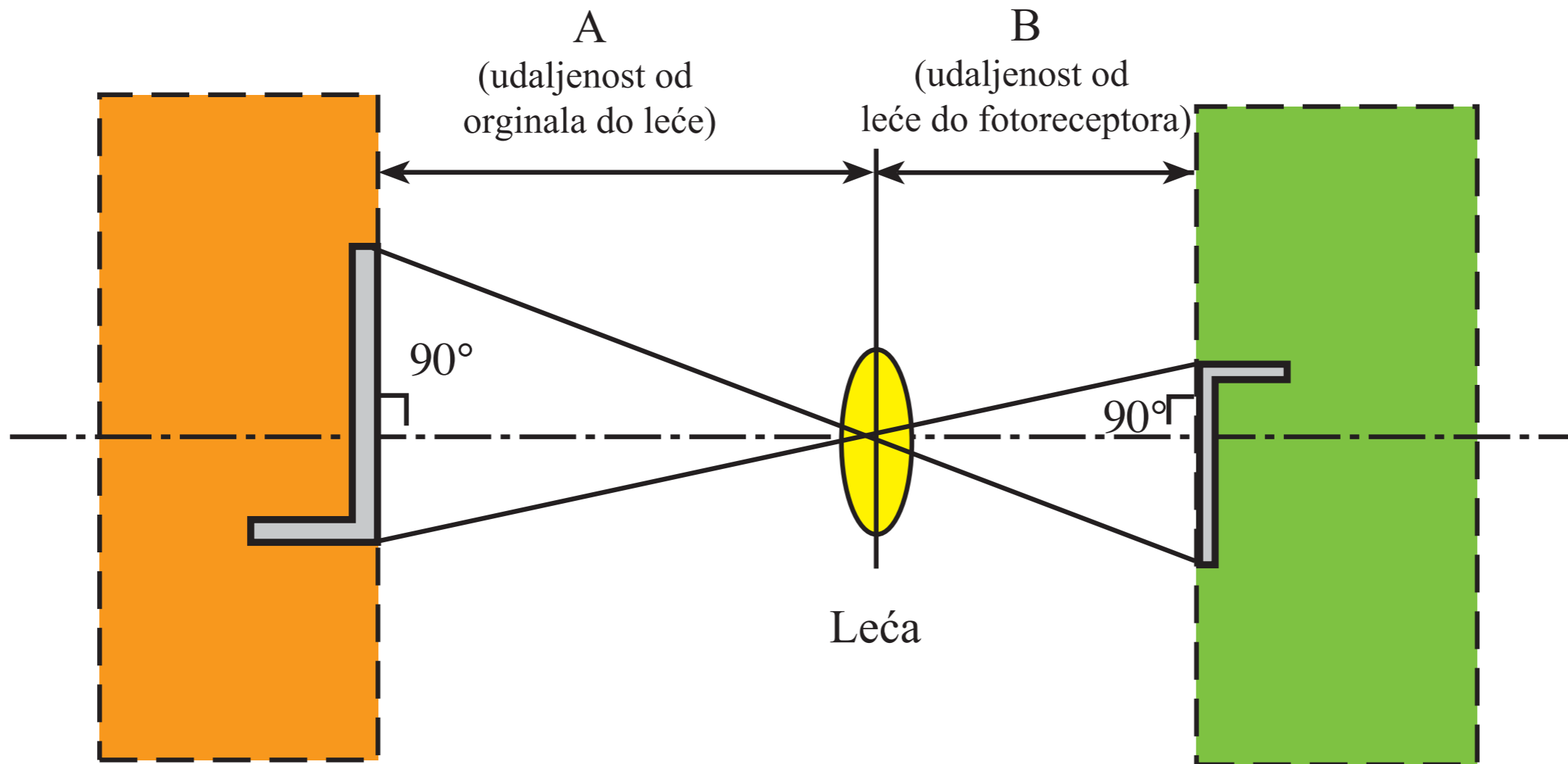


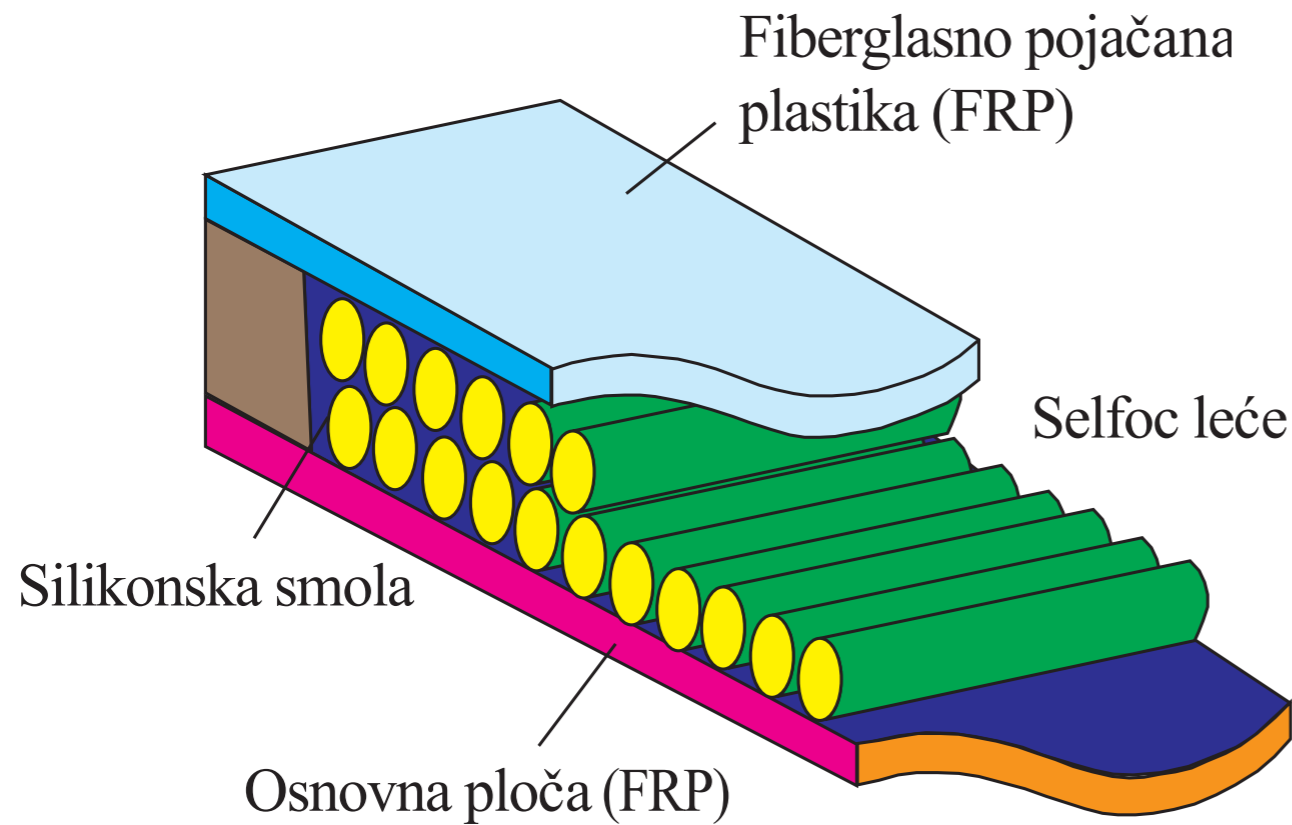
- površina nanešena sa donje strane

Mogućnost regulacije dimenzija reproduciranih slike







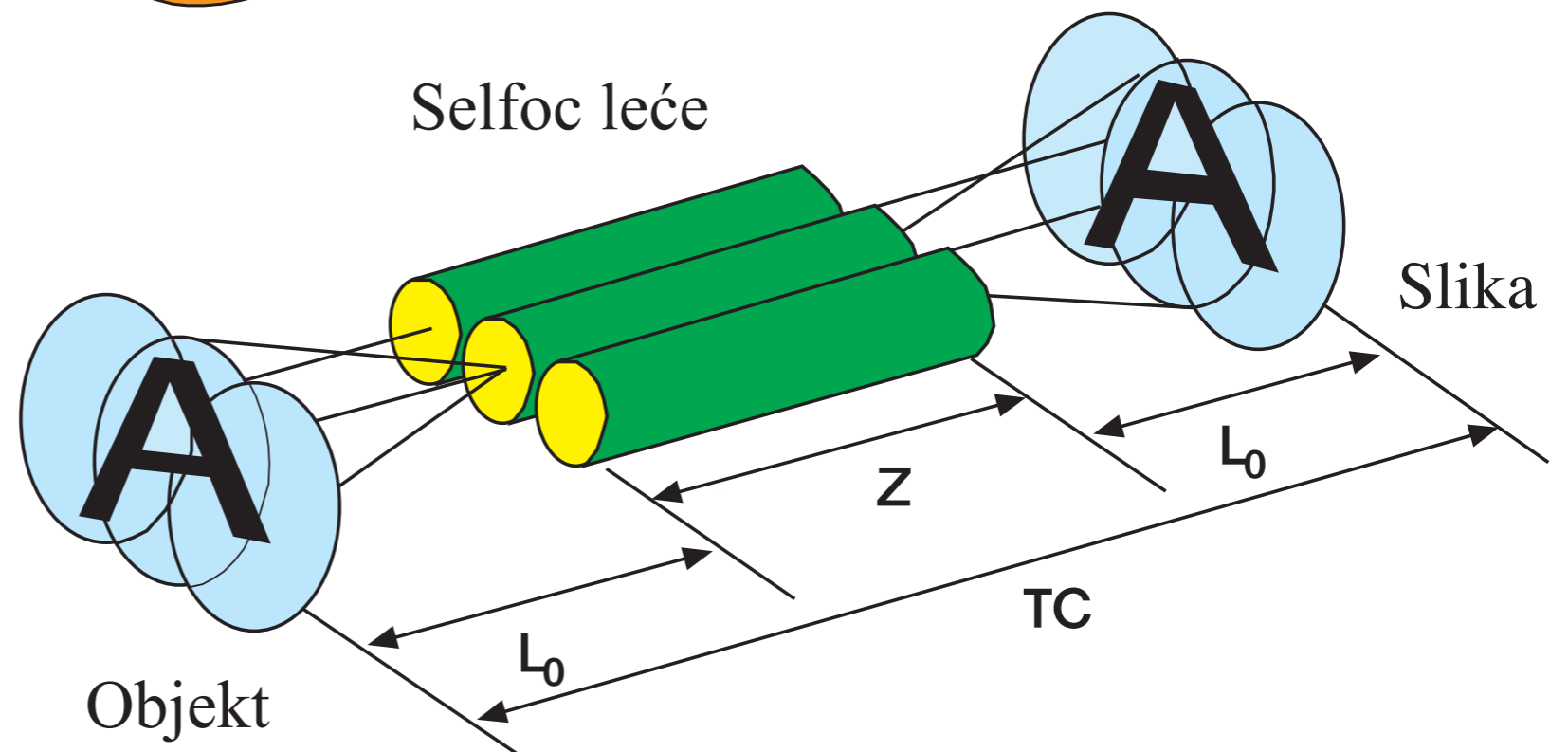


Pozicioniranje pomoću Selfoc leća

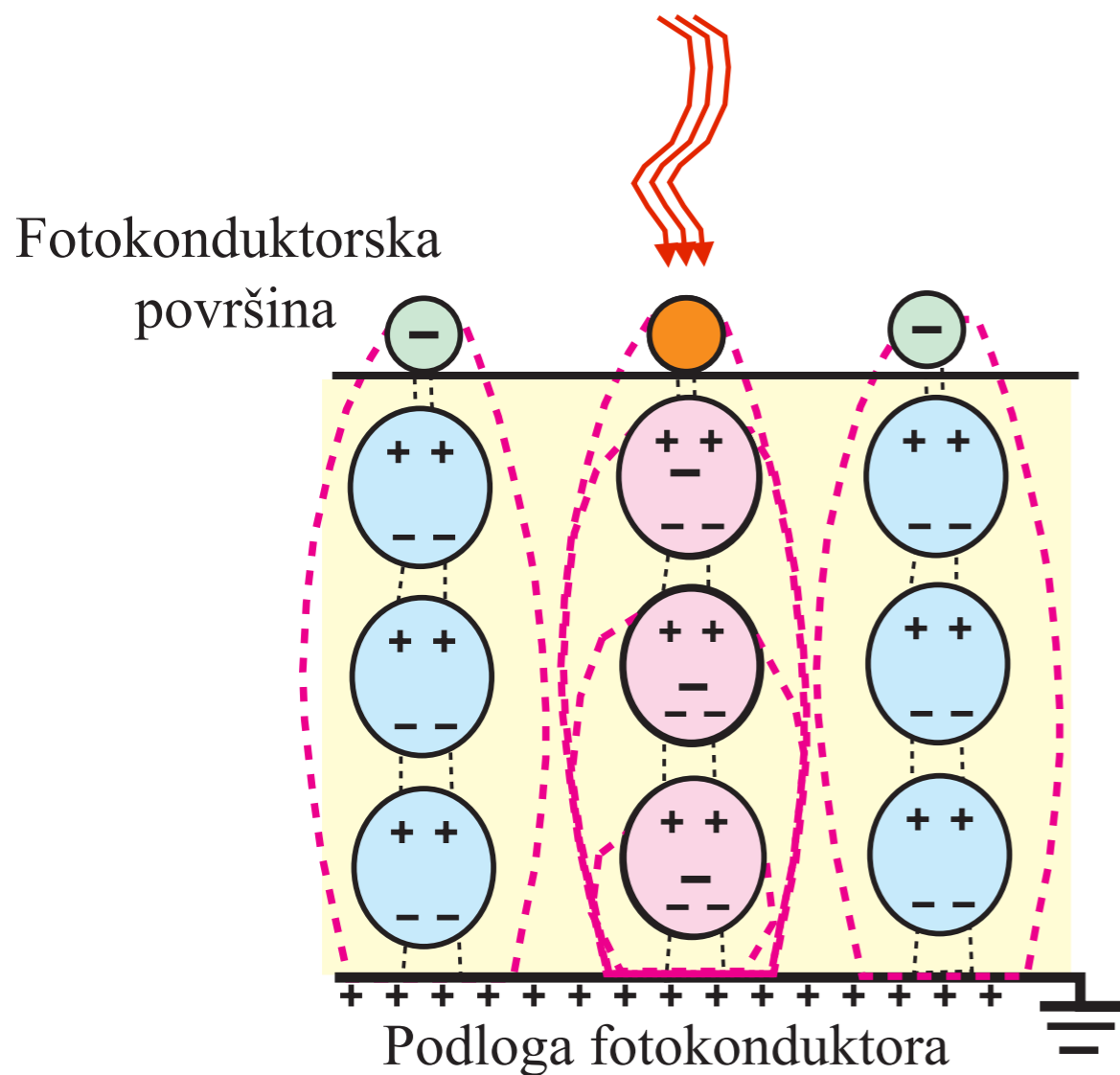
Z = duljina leća

TC = razmak između objekta i slike

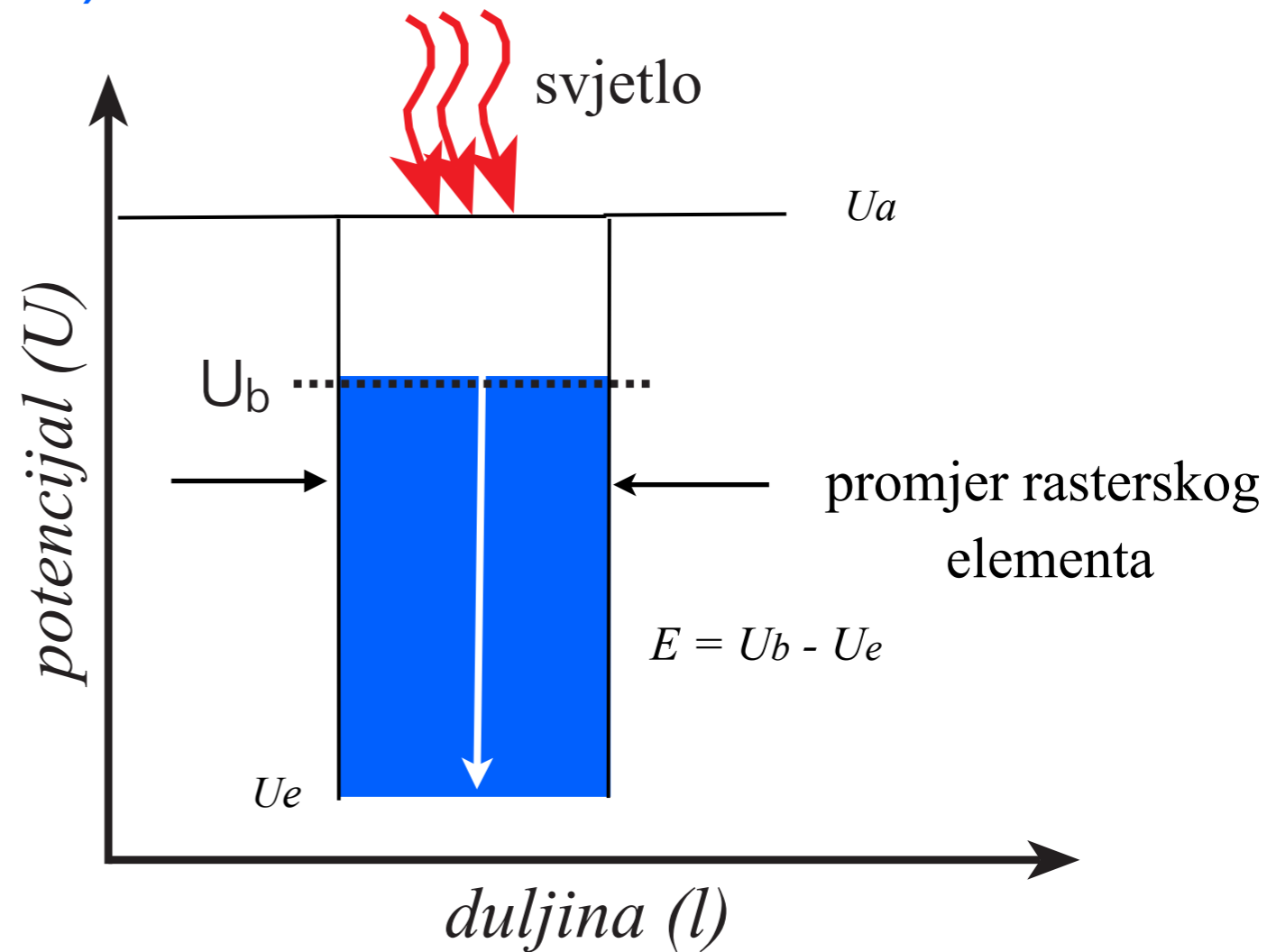
L_0 = razmak između površina leća i objekta (slike)



Pozitivsko osvjetljavanje (DAD)



- ⊖ Negativan ion
- ⊙ Elektrostatsko polje



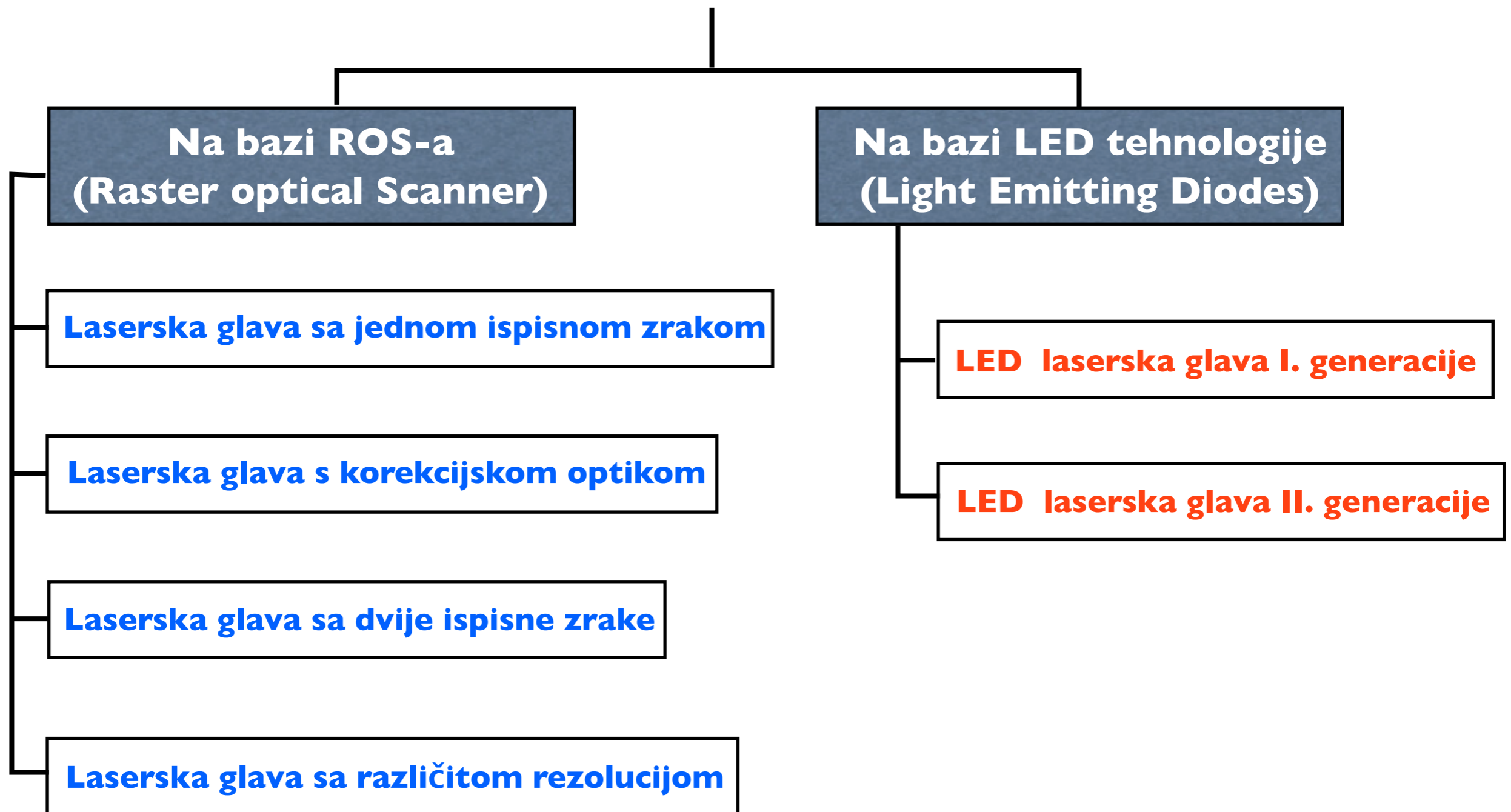
$U_a =$ potencijal nastao nabijanjem

$U_e =$ potencijal neutralizacije

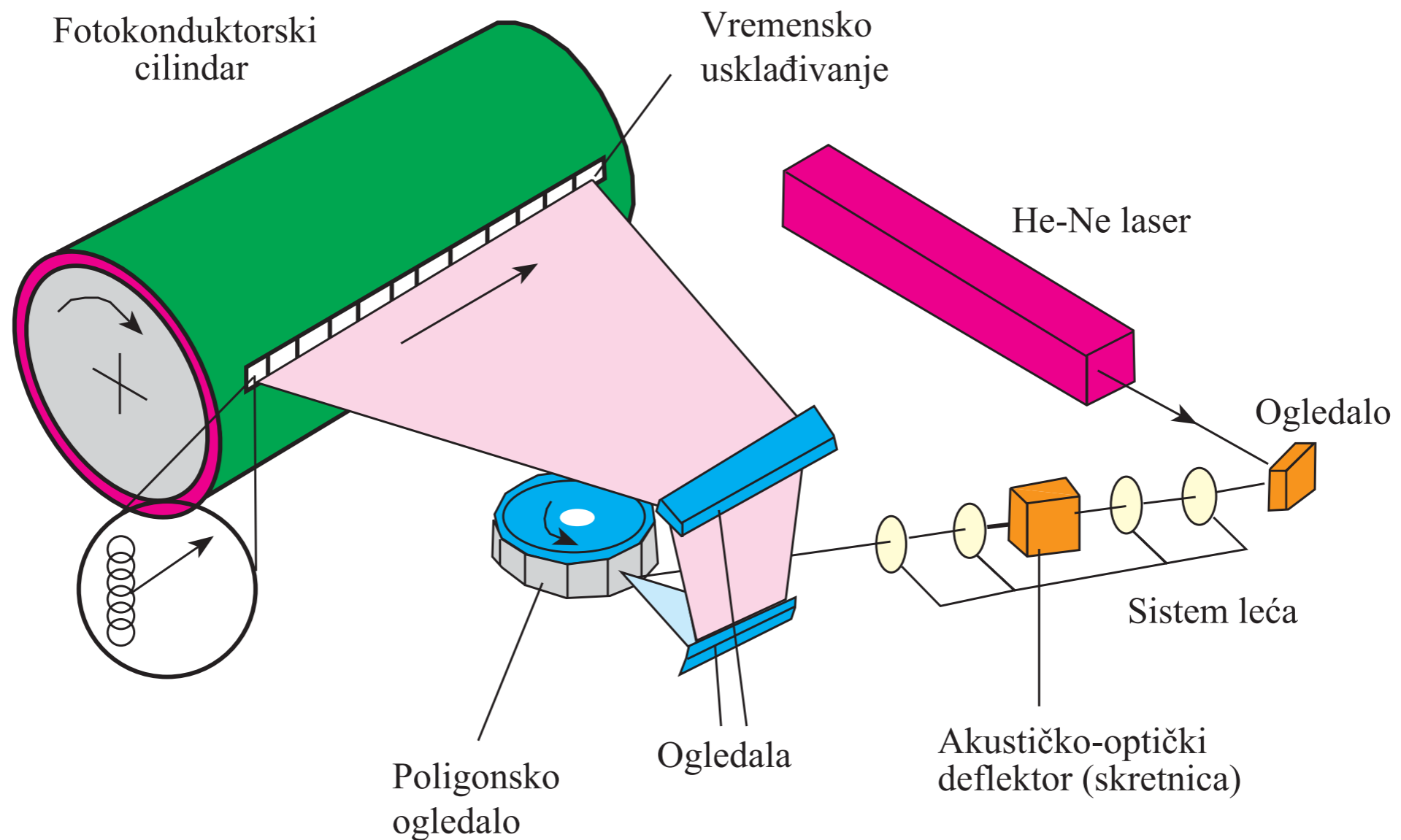
$U_b =$ potencijal nastao osvjetljavanjem

$E =$ električno polje

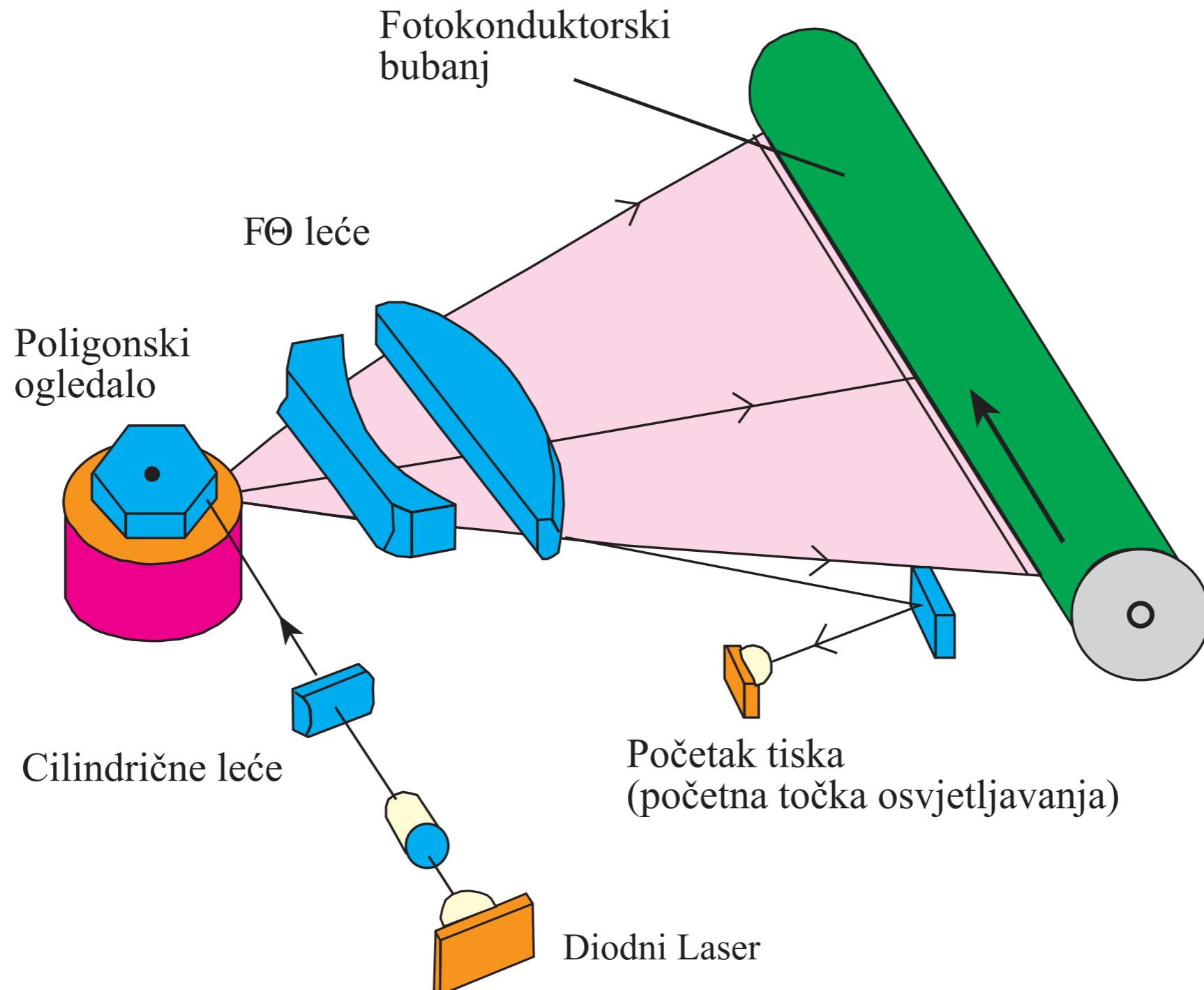
Jedinice za pozitivsko osvjetljavanje



Laserska glava sa jednom ispisnom zrakom



Laserska glava s korekcijskom optikom



Laserska glava sa dvije ispisne zrake

